

Perforce Single Sign-On via Microsoft Active Directory

*Copyright (c) Perforce Software, Inc., 2011-2012. All rights reserved
Portions copyright © The Apache Software Foundation; see included file apache-
license.txt.*

*Redistribution and use in source and binary forms, with or without modification,
are permitted provided that the following conditions are met:*

*1. Redistributions of source code must retain the above copyright notice, this
list of conditions and the following disclaimer.*

*2. Redistributions in binary form must reproduce the above copyright notice,
this list of conditions and the following disclaimer in the documentation and/or
other materials provided with the distribution.*

*THIS SOFTWARE IS PROVIDED BY THE COPYRIGHT HOLDERS AND
CONTRIBUTORS "AS IS" AND ANY EXPRESS OR IMPLIED WARRANTIES,
INCLUDING, BUT NOT LIMITED TO, THE IMPLIED WARRANTIES OF
MERCHANTABILITY AND FITNESS FOR A PARTICULAR PURPOSE ARE DISCLAIMED.
IN NO EVENT SHALL PERFORCE SOFTWARE, INC. BE LIABLE FOR ANY DIRECT,
INDIRECT, INCIDENTAL, SPECIAL, EXEMPLARY, OR CONSEQUENTIAL DAMAGES
(INCLUDING, BUT NOT LIMITED TO, PROCUREMENT OF SUBSTITUTE GOODS OR
SERVICES; LOSS OF USE, DATA, OR PROFITS; OR BUSINESS INTERRUPTION)
HOWEVER CAUSED AND ON ANY THEORY OF LIABILITY, WHETHER IN CONTRACT,
STRICT LIABILITY, OR TORT (INCLUDING NEGLIGENCE OR OTHERWISE) ARISING IN
ANY WAY OUT OF THE USE OF THIS SOFTWARE, EVEN IF ADVISED OF THE
POSSIBILITY OF SUCH DAMAGE.*

*User contributed content on the Perforce Public Depot is not supported by
Perforce, although it may be supported by its author. This applies to all
contributions even those submitted by Perforce employees.*

This document describes a method for implementing single sign-on (SSO) authentication for a Perforce server, using Microsoft [Active Directory](#) as the authentication provider. The scripts provided will not work on a Linux Kerberos server, but a Linux Perforce server will work. These are sample scripts only.

Background

Perforce has offered an undocumented SSO mechanism for several years. As of the 2011.1 release, Single Sign-on is [fully supported](#).

Essentially, Perforce's SSO mechanism relies on a client-side program to obtain a credential, and a server-side trigger to verify that credential. When the SSO mechanism is in place, a client must run the [p4 login](#) command, but if previously granted a Kerberos ticket, will not be prompted for a password.

Architecture

The basic architecture of this solution is shown in Figure 1.

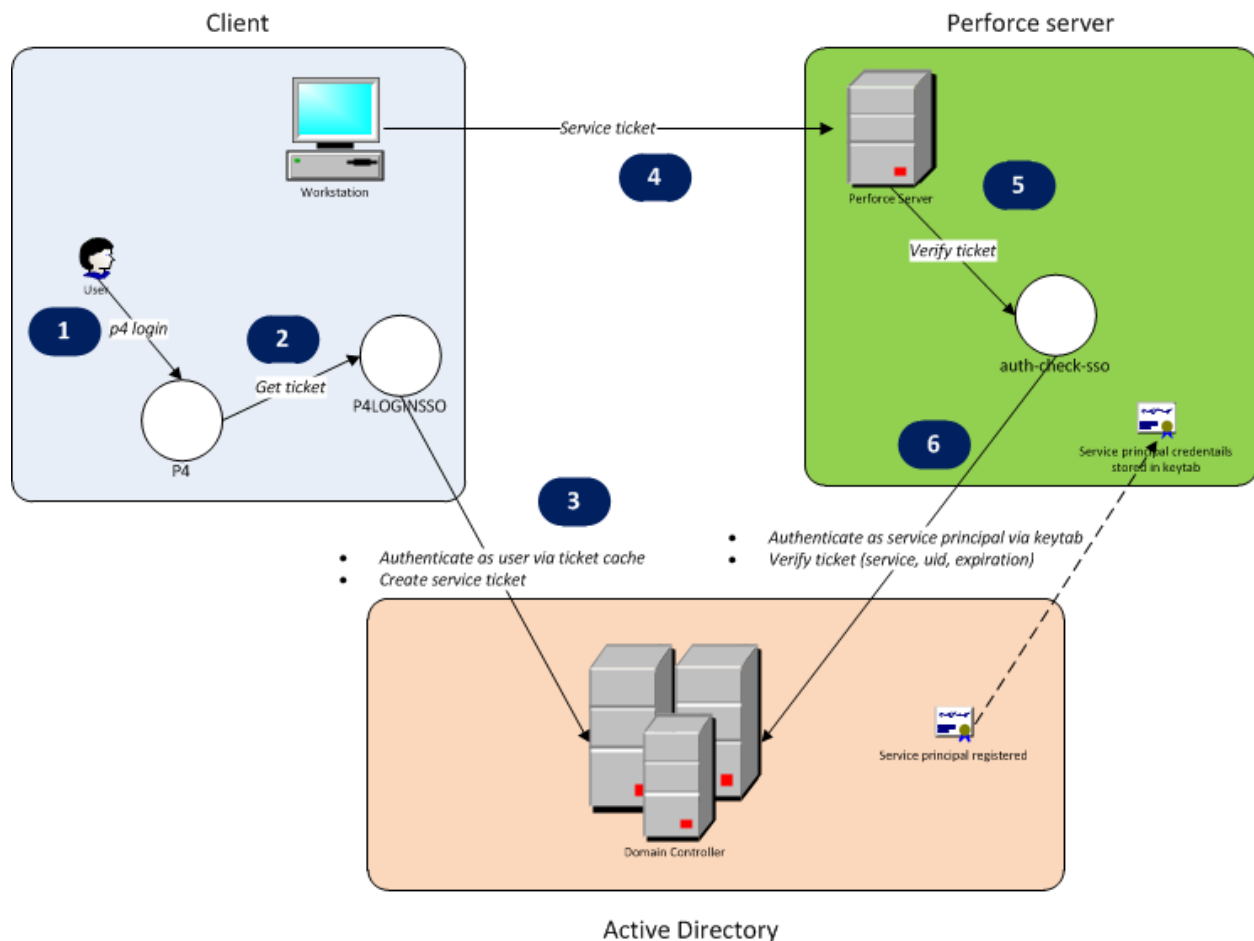


Figure 1: SSO Implementation architecture

The solution relies on the [Kerberos](#) protocol that is part of Active Directory. When this solution is used, a Perforce login request goes through several steps, as shown in Figure 1.

1. The user runs the `p4 login` command, either directly through the `p4` command line client, or through another client program.
2. The client program recognizes the presence of the `P4LOGINSSO` environment variable, and calls the program referenced by `P4LOGINSSO` to obtain a Kerberos ticket-granting ticket.

3. The *P4LOGINSSO* program authenticates to Active Directory as the current user by accessing the Kerberos ticket cache. It then creates a ticket-granting ticket for the Kerberos service used by Perforce.
4. The ticket is returned to the client program and passed to the Perforce server.
5. The Perforce server executes the *auth-check-sso* trigger to verify the ticket.
6. The *auth-check-sso* trigger authenticates itself as the Perforce service principal to Active Directory. It then verifies that the user's ticket is valid.

As the diagram indicates, the Perforce service principal's credentials must be stored on the Perforce server machine in the *keytab* file.

Implementation

This solution uses Java programs to retrieve and verify a Kerberos service ticket for the Perforce service. The using the techniques described at the former website <http://www.javaactivedirectory.com>. The source code was available, along with an [Ant](#) script for building and packaging. To currently obtain this code, download [sso-p4](#) in the Perforce Workshop under Files → main → Download .zip.

Deploying the solution

The details of deploying this solution will almost certainly vary depending on your environment. Therefore, the instructions below are for reference only.

These instructions reference files described in Appendix 2: File manifest.

Test environment details

These instructions worked in a testing environment consisting of:

- A 32-bit Windows Server 2003 machine serving as the Active Directory domain controller (see Appendix 1: Domain Controller setup notes).
- A 2010.2 Perforce server running on the Windows Server 2003 machine. It also works with
- One client workstation running 32-bit Windows XP and the Perforce 2010.2 command line client.
- One client workstation running 64-bit Ubuntu 11 and the Perforce 2010.2 command line client. This workstation used *winbind* to join the Active Directory domain, as described in <https://help.ubuntu.com/community/ActiveDirectoryWinbindHowto>.

The following client programs were tested:

- The Perforce command line client, *p4*, version 2010.2
- P4V, version 2010.2
- P4Eclipse, version 2010.1
- P4SCC, version 2010.2

Of these four clients, *p4*, P4V, and P4Eclipse let a user authenticate without any password prompt. P4SCC gives a password prompt but authenticates successfully if the password field is left empty.

Note that SSO has also been successfully deployed on a newer Windows Active Directory server and Perforce server 2016.1.

Client

1. If using Windows, make sure that Windows will allow use of ticket-granting tickets.
2. On each client workstation, put the files *login.conf*, *sso-client.jar*, and *sso-client.bat/sso-client.sh* into a directory accessible to the user.
3. Modify the client's *sso-client.sh* or *sso-client.bat* file.
4. Modify the client's *login.conf* file, keeping only the *SignedOnUserLoginContext* section.

```
SignedOnUserLoginContext
{
    com.sun.security.auth.module.Krb5LoginModule required useTicketCache=true
doNotPrompt=true;
};
```

5. Customize the P4LOGINSSO driver script (*sso-client.bat* for Windows, *sso-client.sh* for non-Windows). The general format is:

```
"<path to JDK 6 java>" -jar <path to sso-client.jar> <path to SSO log file> <overwrite SSO log file during each run? true/false> <domain/realm> <domain controller> <path to login.conf> "<fully qualified service principal>"
```

Set the P4LOGINSSO environment variable to point to *sso-client.bat* or *sso-client.sh*

For example, on a Linux client, run

```
export P4LOGINSSO=/home/DEV/perforce/p4/sso-client.sh
```

Server

1. Make sure that Windows Active Directory server will allow use of ticket-granting tickets (TGT).
2. On the Perforce server machine, put the files *login.conf*, *sso-server.jar*, and *sso-client.bat/sso-client.sh* into a directory accessible to the account running the Perforce server. The "p4 triggers" configuration will access these files.

3. Customize the *ServicePrincipalLoginContext* section of *login.conf*. The general format is:

```
com.sun.security.auth.module.Krb5LoginModule required useKeyTab=true doNotPrompt=true
principal="<fully qualified service principal>" useKeyTab=true doNotPrompt=true storeKey=true
keyTab="<path to keytab>"
```

Example server *login.conf* file. You will generate a keytab file location when you run *ktpass* or *ktinit*.

```
ServicePrincipalLoginContext
{
com.sun.security.auth.module.Krb5LoginModule required useKeyTab=true doNotPrompt=true
principal="p4/bruno.ad.foo.com@AD.FOO.COM"
useKeyTab=true doNotPrompt=true storeKey=true keyTab="/etc/p4.keytab debug=true";
};
```

See Appendix 1: Domain Controller for a description of how to generate the *keytab* file. Refer to the documentation on [Krb5LoginModule](#).

4. Customize the *sso-server.bat* driver script. The general format is:

```
"<path to JDK 6 java>" -jar <path to sso-client.jar> <path to SSO log file> <overwrite SSO log file
during each run? true/false> <Perforce user ID passed as trigger argument> <domain/realm>
<domain controller> <path to login.conf> "<fully qualified service principal>"
```

5. Install the trigger on the Perforce server:

- Run

[p4 triggers](#)

- Add an entry similar to:

Triggers:

```
sso auth-check-sso auth "<path to sso-server.bat> %user%"
```

- Restart the Perforce server.

```
p4 admin restart
```

Usage

Once the SSO solution is in place, a Perforce user will not have to supply a password when logging in, although command line users will first need to run *p4 login*.

Troubleshooting

Review the log files specified in the *sso-client.bat/sso-client.sh* file. If the client issues a ticket, then focus on fixing the server side.

Example client log:

Set Kerberos properties

Authenticated as current user

Authenticating as: bruno@AD.F00.COM

Created client credentials

Created service context

Created service ticket

Got encoded service ticket

Service ticket:

```
YIIIEQYJKoZIhvcSAQICAQBggghoMIIIZKADAgEFoQMCAQ6iBwMFACAAAACjgggMYIIHIDCCB4SgAwIBBaESGxBBRC5NQVRIV09SS1MuQ09Noi0wK6ADA
gEAOsQWlHsCcDQbHGthbG1kLTAwLWFOlMfKlM1hdGh3b3Jrcy5jb22jggc4MIHKNKADAgEXoQMCAQKiggcmBIHIIrDC4HkvbGp1QEinkVv+gaTWsFNjLY
MgaJo4xrTbxmcEhQYS/NDGeYprTrLbo5A4FggvCnpQK/Rh7L4s2mvx8IyaUU35JpRNW7eg8cFzBOUEWF1x863rvVFigMa+CJGWbf/vgUIK2L4H17/C1p8
1YPiTyM9pKBgwMZCpFacqRYbIUtb+u4KD6pyoISJk/oPa8Su/hvmjLpSicxhc5doc5Ea8B1jG7g7Od/bU+195WlTk//lpZvuz01VE2dgwppCys6lyzDhm
mOFbZEkd048PooGdgYxliYRYHXoYwYfCYjR/1cb9WjqI+nBylOPhy+aAwpViywyYxdQJ2kaF4KrcmWHAdOEqOV8B64sKzcad27mBEdfZBS1NVXXBUMPg
MdQqUNh+FyCi3bUN1hvkFMJlqfds1Lyyai0boH6NQ1dNt97ptq0qj+dXZyTpXoaaVH6qx8yt+e4NBjBBje55hA+aVLXs5qB+WDeY3QZhejb6NmJsm6m19
1CG1EbygJir2UD0uN6X5R/hgR7Fe1CGE8D83vL60szz1gdWF5R4GGq/IG7CyGnbgfDaaLZvoxQYayWeJvirrbvIdTet51fpCEDpukKI26i5Qc1+00DLIjY
uEeZKQzkfw45HJo88bI/UaRH+KBPBbisF2Co5CXVvzk33FXdavZNeS2jcbidHdqZY4LPzzc02BtGC68KmdF31rekaHgxcBmJVjvhEvPp6dZGxXo9sEgmp
krFo06Cgs4vEXZnXaOx5fjI9THWUuzrz0KHxXjP8nRXRQvR6gmtZLUDp9yu2tGm1+dPW96K4J5AXY4TpuEjSVPZETiM4knY2S1muqddERsrbhmK5vKo6J
eyQZfAxABSh+A0oduKkC325prWkTvZgTGwipds+IbT1e10J2xRn5z2oMmTfwo3XurnfuA0FNyDoXWymtvgBBc1K4v+Elc3XvPMPWHM5mrwH1VLdS27Kxg
hiEgqfRXI3dnRXEMebBZOPULka6mFED40IjosgjNrQNd29YUqkTj5K928yBn4ktPctn00zqgZV78XMxyS5Mnakn1eozzzUjSAC+7f7LQPq/GSxdFsgMc
jw1OmZfnKArRVGVX2q5n1s1lxzHpoGh+L31na/Hms7pc/ZieHuaqrVVxuAYa9DhJx60KkTtoD8DWT/XFe8gM/AYbTLJpfBYAUV2ydQ/E06z3EaRi+294
1bwUq848UH8Cp1gt1CMu/oTr17QWwVfUsSqtGwufH9aB+ukYRFnOHQ8mDnnUP3Mkr3i3g9zJvxYfY6YX6uZ8qGKvYcmiSV0vtqRpuaa1VsG14X1Uak3Gt
IJahJg1R6nCAib56fsYd0k0sVn02/KKwWkqUBBw751RP4BARed5mbV/ad+H/vVvXg0QvVnLDMdYbpetkSaiuwYdsOZqv5KuuxEza53ByJUMsf5tzVxNr9
tKuiE0MOOKzs7u2UugMH7qzwaQbLwNsua8XRYwVJjdgK18EZbHxkZEHook3UinuYdyim4n36f2hKjG/j0cztGxGmoPM4NdYdaRntbar7jMYotTnBDT8L
dwWPofp1gxfj+dj5f7r9dVm2aEpiz2sc39FBquwmq91V6wECRVtOX10PVAHYEGQaFGi0e1sicGxSZKqi7KB8zpcEtIgtxWpuBt+rfgTf9vK2/GOYQVAF
RHGIcWi1KO+NAh5k/RWidsVz6k2pi+xA2qKwKbmhy+Bxm5rUEbrmw3UcW5T5FxlLG0H1L4wMEh5e8Aaty1Iuc8ZkC8Q9/KLX64mCUACnZqeMvYBdPtJb
Tqtd5TfRMOWmcOZcCZ+UUF/fUdqJCPUGsTKox9DRpOZH40vuh6BwX4oHuegrL2MovDDsX7htjLKQKkjun2aaLnc7r4PeTVuHc9jaQCxri7vHfEgMjWh1
DX9u5AiaR10xJNzE5S5xItRtvsQBoQgJBnCRG1YXRYr2n4F7p54mBRtmfw297113eLd9UX978krvGrS4TC7oZo51hTtrvizU2YkHhZp0a9j9zfr590oXZ
ub1wzG0923aRDPbiZJQ1+PxIm1v0Px30yWCW5LUCJR07huKNa+vpsCJXaRNY7peT8Qs9XB271AfdSMNd2k0bg8DyG3vi2ohd7wEgwoi0maSPA5S7tXM1K
yeNc8gntapAZcgYXsiAX0MnzFQG//qXVDujmbWNsXY113aL16W0GARcRmCorB+R9yiSyI0bbn0c+LL+SXGOMHWe2EOJ2qTspiSbfCEfiK2r6ZgLK+bQcJ
7RJQAH/MEFDjId1c/4PTQtynvDS97BWXeDfAb08UjXubvI+A/bz0i0m05ju3BLdqRHe+o0XySibSMRaHtvHLikoM9idnLHaNXF1c8QorXgHxpYCsrg4J
78SKtQ0pssYy3Ek+bDZUSDORgTC7s+7kT3nMFMIUYptqPRM6HIGbk0YKB/fkdJ4ri2pIG+MIG7oAMCAREigbMEgBDoYgAtj0ayt7Rpr4yae8jxgAxHxrB
HfphwHNSCUoJYnrvoQ2fmmddj4kFH9CTAuu17Qv02XN/oyVqP0yoAr7eCzYtQI71B40NoS1bFGPGBoHhNePI8bCPZU80uwo/hpB+EW/QhkdFbY+mWlvd
U1F9k+dSmK21XwnbGsn6AbeJaoF6Pa45GT40FEyjpJfVh2GHU2jcaSwdeJ6LZ719JfifisShLiIjV6Un8nmjgM4ny/g==
```

Wrote ticket

Try various Windows server options.

Appendix 1: Domain Controller setup notes

This section is not a comprehensive description of how to configure an Active Directory domain controller. Rather, it describes particular steps that may be of interest. Use a Windows Kerberos/AD server, not a Linux Kerberos server.

As a general approach, the steps described at at <http://d3planet.com/rtfb/2009/08/26/building-an-active-directory-domain-controller-for-development-using-vmware-workstation-pt-2/> were used to configure the domain controller for a test environment.

- The domain controller required a recent version of Windows Support Tools. For Windows Server 2003, the Support Tools are available from <http://www.microsoft.com/downloads/details.aspx?FamilyID=96a35011-fd83-419d-939b-9a772ea2df90>.
- The domain controller required a patch for a Kerberos encryption bug (Microsoft KB#[833708](#)).
- When configuring the service principal account, you may or may not have to uncheck the *Use DES encryption* option after creating the account. If you have problems, change the password after this option is selected.

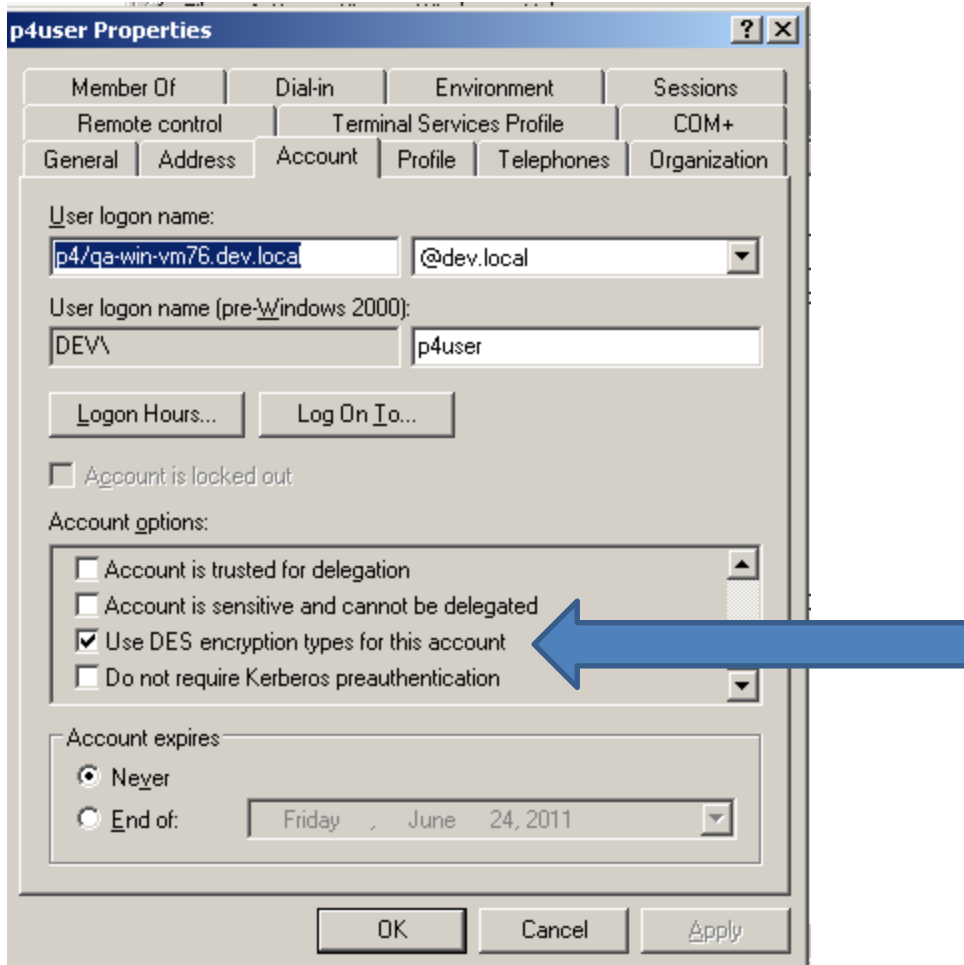


Figure 2: DES encryption option

- When registering the service principal account on the Perforce server machine, create the *keytab* file using *ktpass*. For example, in a testing environment, using *p4user* as the service principal account for the *p4* service, in a domain called *DEV.LOCAL*:

```
ktpass -princ p4/domain-controller.dev.local@DEV.LOCAL -ptype KRB5_NT_PRINCIPAL -crypto
DES-CBC-CRC -mapuser "p4user" -pass * -out c:\keytab -kvno 0
```

Alternatively, you can run on the Perforce server

```
ktinit -kt /etc/p4.keytab
```

where */etc/p4.keytab* is specified in the *login.conf* file on the Perforce server. Note that DES-CBC-CRC is used as an example; others can be used as well.

The *keytab* file is then used on the Perforce server, and is referenced in *login.conf*.

- Link the *p4user* account to the *p4* service using *setspn*:

setspn -a p4/domain-controller.dev.local@DEV.LOCAL p4user

Appendix 2: File manifest

Apache-license.txt	Apache Software Foundation license
Java\KerbClient	Java source code and JAR file for client side program
Java\KerbServer	Java source code and JAR file for server side trigger
Java\login.conf	<i>Login.conf</i> file used on both client and server
Java\sso-client.bat	Batch file used to run the client Java program as the <i>P4LOGINSSO</i> program on Windows
Java\sso-client.sh	Shell script used to run the client Java program as the <i>P4LOGINSSO</i> program on non-Windows platforms
Java\sso-server.bat	Batch file used as <i>the auth-check-sso</i> trigger
Java\build.xml	Ant script used for building and packaging the Java code. Depends on log4j and commons-codec Apache libraries.

Appendix 3: FAQ

Question	Answer
Why write this solution in Java?	Java has well-structured and documented Kerberos libraries. The same Java programs can be used on multiple platforms.
How much can Perforce support me if I have problems implementing this solution in my environment?	Perforce technical support can provide assistance with Perforce's SSO mechanism. Unofficial assistance may be available for the Java programs. Detailed assistance with Active Directory problems may be outside the scope of Perforce's ability to help.
What happens if a client doesn't set the <i>P4LOGINSSO</i> variable?	They will fall back to regular authentication. You may wish to provide an <i>auth-check</i> trigger so that they can still provide their Active Directory password.
What happens if Active Directory is down?	A client can unset <i>P4LOGINSSO</i> and fall back to regular password authentication. If you need to remove the <i>auth-check-ss</i> trigger on the server and are locked out of Perforce, consult http://kb.perforce.com/article/838/regaining-super-user-access-to-your-perforce-database and http://kb.perforce.com/article/834/p4d-xf-flag .