

Perforce-User-Group 06/2004 Karlsruhe

Bugzilla & Perforce Integration TUI InfoTec

22. Juni 2004
Ralf Oyen

Ralf Oyen

TUI InfoTec GmbH & Co KG
Karl-Wiechert-Allee 4
D 30625 Hannover / Germany
mailto:ralfoyen@tui.de

Fon: +49 511 567 5204
Mobil: +49 172 567 5104
Fax: +49 511 567 93 5204

Perforce & Bugzilla at TUI



- ① 1994-1998 1993 self-written problem database (C, OS/2-GUI, Sybase-DB)
- ① 1998-2001 IBM TeamConnection for SourceCodeManagement, build process and problemtracking (Defects & Features)
 - ① good process
 - ① bad performance
 - ① old GUI
- ① since 2001 Perforce for sourcecode versioning & build process
- ① further on using TeamConnection for defect tracking.
 - ① Using the bug number as first word in submit comment as a logical link from changelist to bug
- ① in 2002 searching for a new problemtracking-tool
- ① -> Bugzilla

- ① installing on WinNT for some tests
- ① then installing on IBM AIX
- ① using Bugzilla Version 2.17 instead of 2.16 because 2.16 was restricted to 64 products and some other new features
- ① 3/2003 migration of all bugs from TeamConnection to Bugzilla including the history
- ① further on using the bug-number as first word in submit-comment

Why not using P4DTI ?

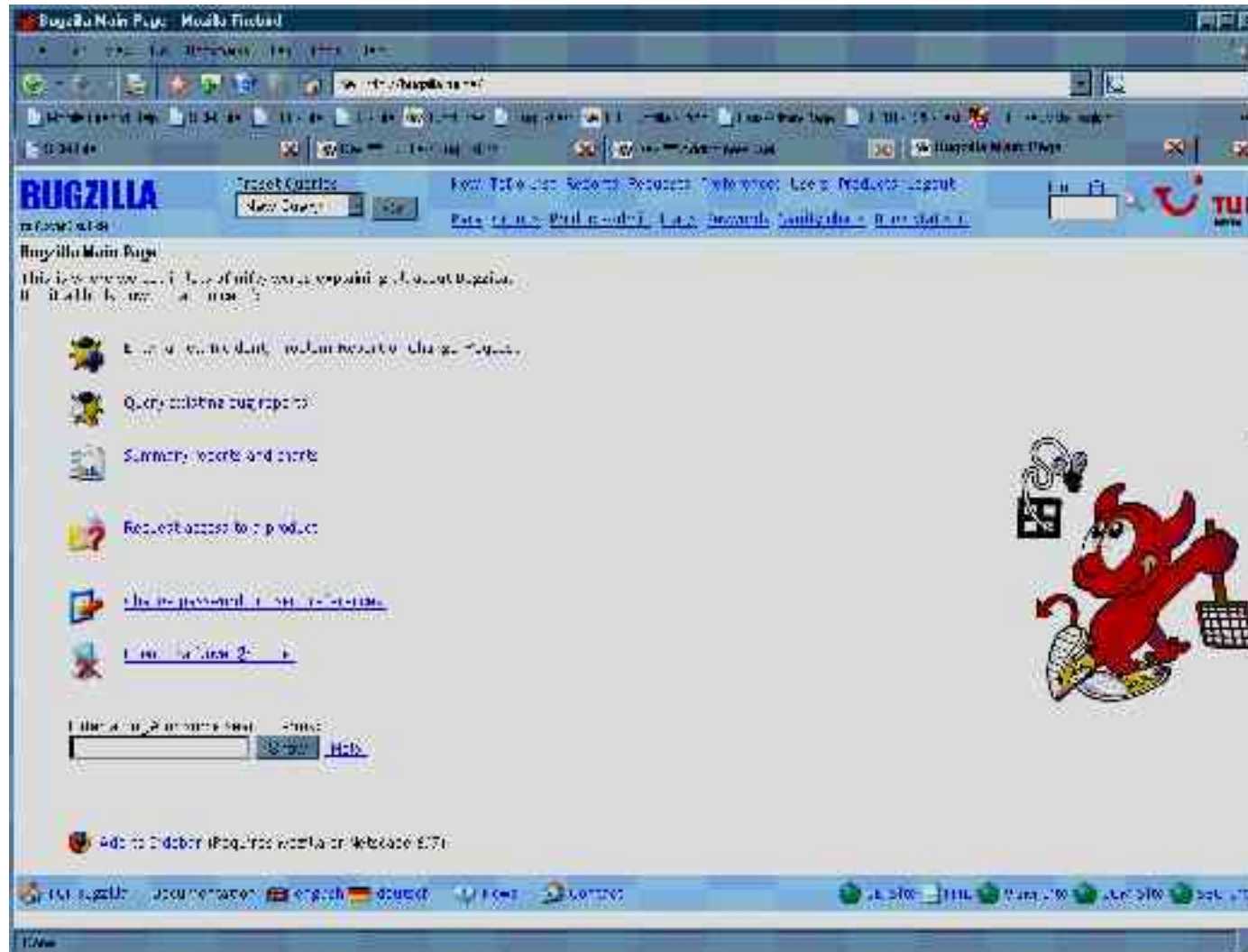
- ① P4DTI not available for Bugzilla 2.17
- ① P4DTI synchronizes all bugs and allows user to change P4-Jobs
- ① not installed in 5 minutes ;-)
- ① use of weak connection between both tools was ok
- ① no requirement from developer

Our own integration

- ① Simple idea was born (between christmas and new year) to connect both tools:
- ① defining additional fields in p4 jobspec
- ① restricting all fields to ,once' so they can't be changed from developer
- ① synchronizing the Bugzilla-Bug-Data without history to p4 jobs
- ① on each bug-change in Bugzilla: synchronize the data to p4 jobs
- ① additional creating a link in job-desription to Bugzilla-bug
- ① using ,Change xxx' in Bugzilla-comment creates a link to p4web
- ① submit-trigger in p4d fixes automaticly the bug found in the first word in submit-comment

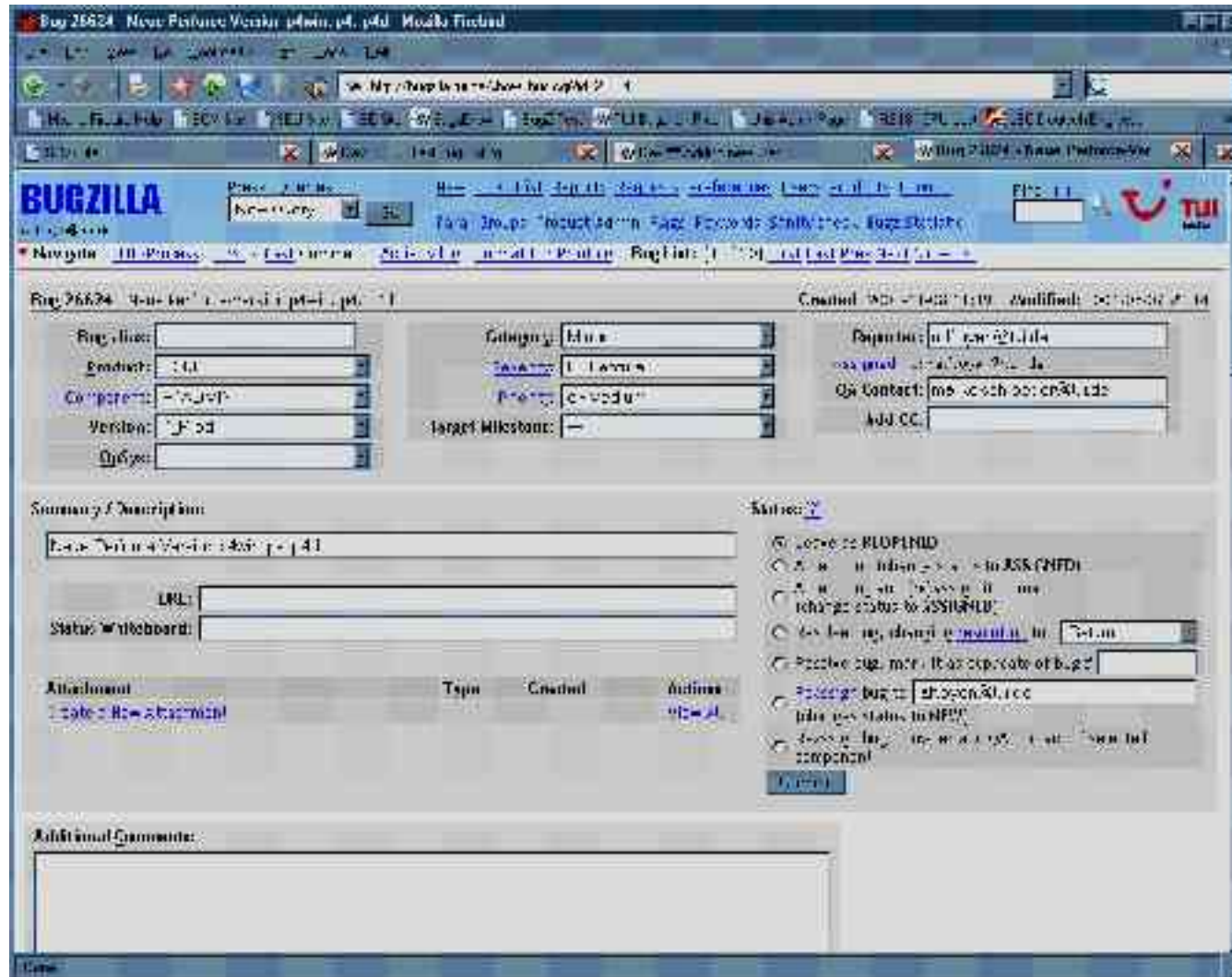
Perforce & Bugzilla at TUI

Bugzilla-Main-Page



Perforce & Bugzilla at TUI

Edit a Bug



BUGZILLA

Bug 26624: New Feature: Veritas p4win, p4, p4d, Model: Fixed

Created: 2004-06-22 10:19:09, Modified: 2004-06-22 10:19:09

Reporter: m...@sch...@ch...@t...@de
Assignee: m...@sch...@ch...@t...@de
QA Contact: m...@sch...@ch...@t...@de
Add CC:

Summary / Description

URL:

Status Whiteboard:

Attachment	Type	Created	Author
1: state - How to install			m...@t...

Additional Comments:

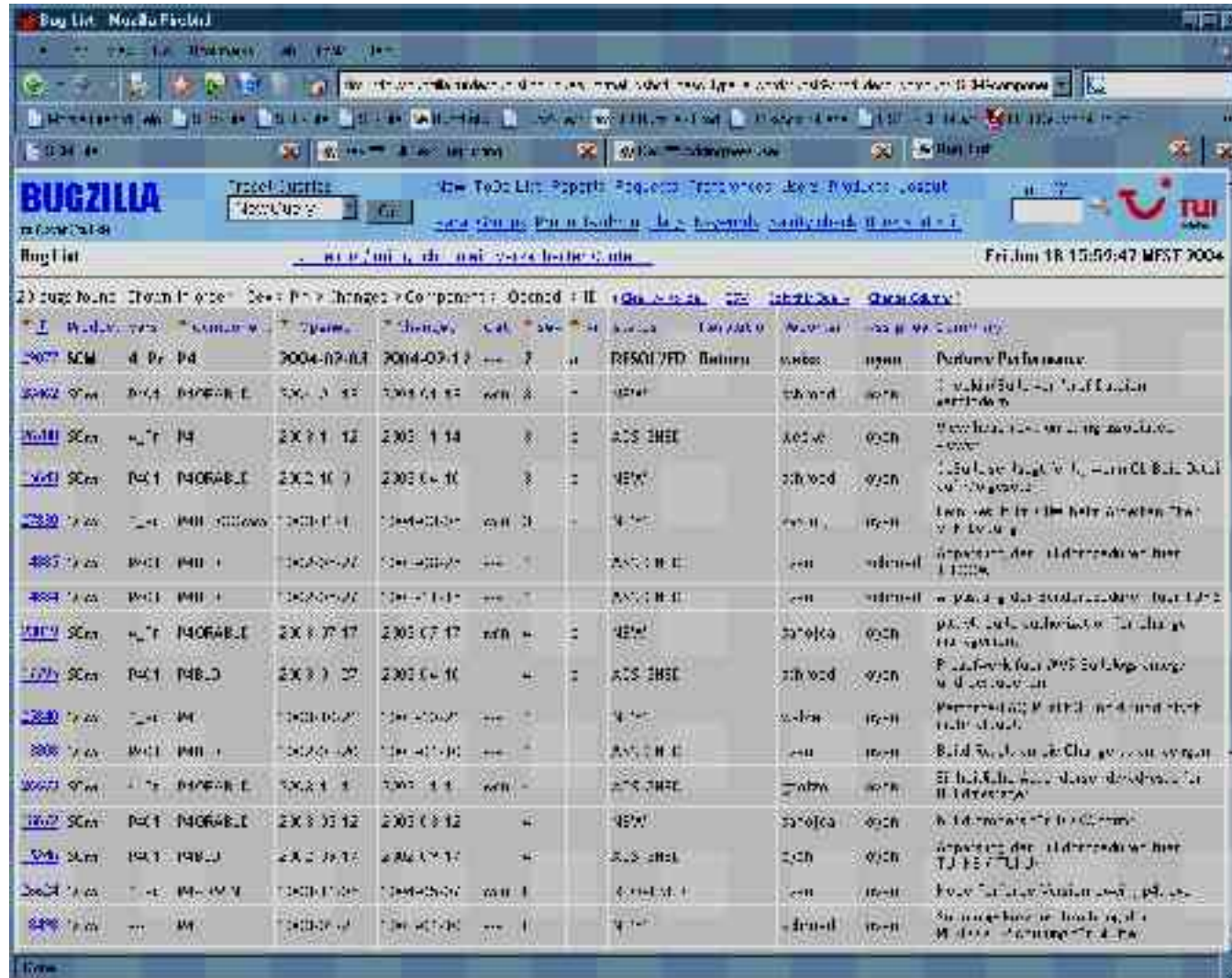
Status:

- Change to: NEW
- Assign to: m...@sch...@ch...@t...@de
- Assign to: m...@sch...@ch...@t...@de
- Change status to: ASSIGNED
- Assign to: m...@sch...@ch...@t...@de
- Resolve bug, mark it as duplicate of bug #
- Change bug to: m...@sch...@ch...@t...@de
- Change status to: NEW
- Assign to: m...@sch...@ch...@t...@de

Change bug to: m...@sch...@ch...@t...@de

Perforce & Bugzilla at TUI

Display a Bug-List

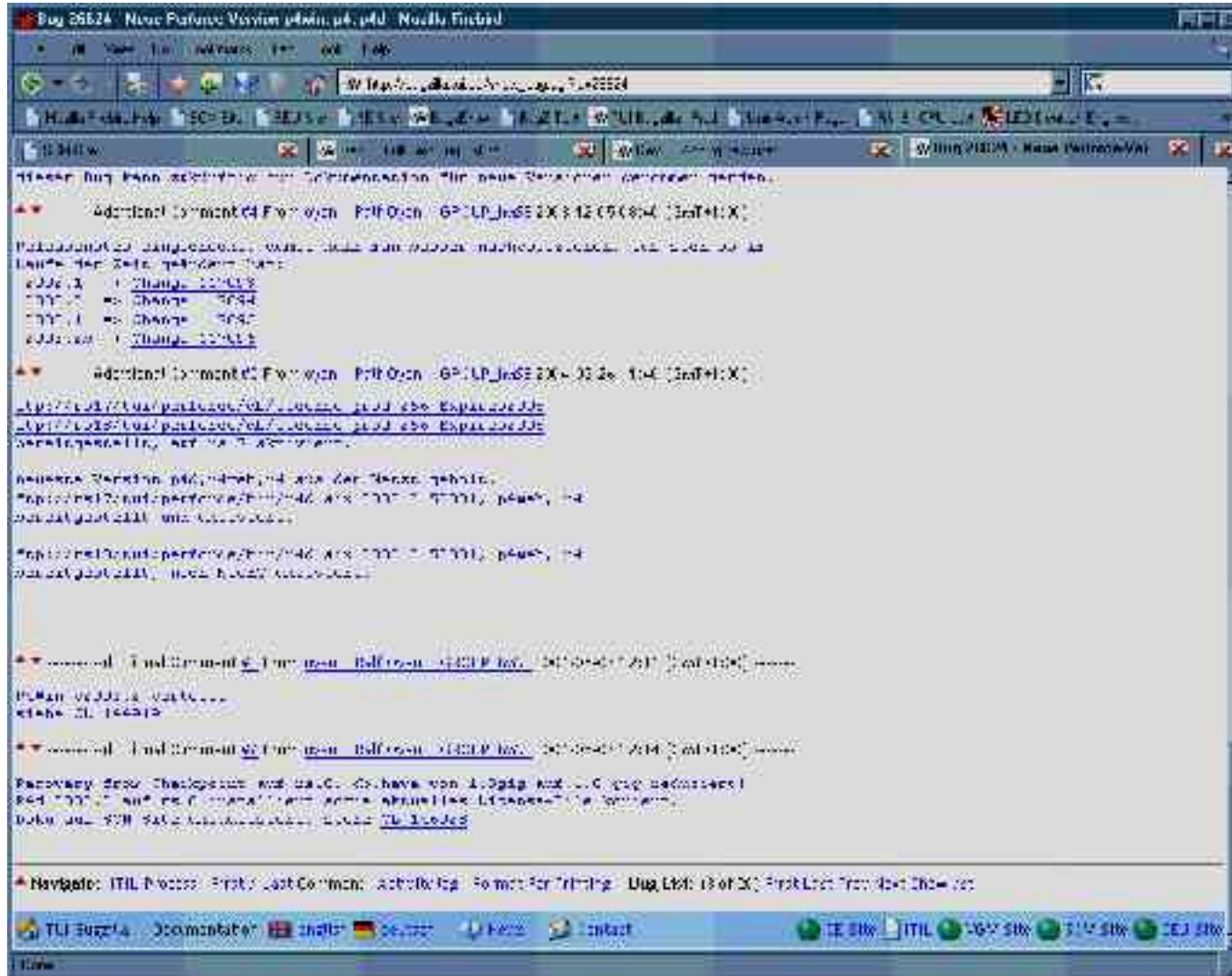


The screenshot shows a web browser window displaying the Bugzilla interface. The browser's address bar shows the URL: http://www.infotec.de/bugzilla/buglist.cgi?product=Perforce&component=Perforce&bug_status=ALL&bug_type=any&bug_severity=any&bug_priority=any&bug_resolution=any&bug_status=ALL&bug_type=any&bug_severity=any&bug_priority=any&bug_resolution=any. The Bugzilla header includes the title 'BUGZILLA', a search bar with '4000 Bugs' and a 'Go' button, and the TUI logo. The main content area is titled 'Bug List' and contains a table of bugs.

ID	Product	Component	Summary	Type	Severity	Category	Assignee	Reporter	Created	Updated	Resolution	Status	Priority	Resolution	Summary
30077	SCM	Perforce	Perforce Performance	Defect	High	Perforce	Perforce	Perforce	2004-09-17	2004-09-17	Not Done	Open	High	Not Done	Perforce Performance
30062	SCM	Perforce	Perforce Performance	Defect	High	Perforce	Perforce	Perforce	2004-09-17	2004-09-17	Not Done	Open	High	Not Done	Perforce Performance
30041	SCM	Perforce	Perforce Performance	Defect	High	Perforce	Perforce	Perforce	2004-09-17	2004-09-17	Not Done	Open	High	Not Done	Perforce Performance
30040	SCM	Perforce	Perforce Performance	Defect	High	Perforce	Perforce	Perforce	2004-09-17	2004-09-17	Not Done	Open	High	Not Done	Perforce Performance
30039	SCM	Perforce	Perforce Performance	Defect	High	Perforce	Perforce	Perforce	2004-09-17	2004-09-17	Not Done	Open	High	Not Done	Perforce Performance
30038	SCM	Perforce	Perforce Performance	Defect	High	Perforce	Perforce	Perforce	2004-09-17	2004-09-17	Not Done	Open	High	Not Done	Perforce Performance
30037	SCM	Perforce	Perforce Performance	Defect	High	Perforce	Perforce	Perforce	2004-09-17	2004-09-17	Not Done	Open	High	Not Done	Perforce Performance
30036	SCM	Perforce	Perforce Performance	Defect	High	Perforce	Perforce	Perforce	2004-09-17	2004-09-17	Not Done	Open	High	Not Done	Perforce Performance
30035	SCM	Perforce	Perforce Performance	Defect	High	Perforce	Perforce	Perforce	2004-09-17	2004-09-17	Not Done	Open	High	Not Done	Perforce Performance
30034	SCM	Perforce	Perforce Performance	Defect	High	Perforce	Perforce	Perforce	2004-09-17	2004-09-17	Not Done	Open	High	Not Done	Perforce Performance
30033	SCM	Perforce	Perforce Performance	Defect	High	Perforce	Perforce	Perforce	2004-09-17	2004-09-17	Not Done	Open	High	Not Done	Perforce Performance
30032	SCM	Perforce	Perforce Performance	Defect	High	Perforce	Perforce	Perforce	2004-09-17	2004-09-17	Not Done	Open	High	Not Done	Perforce Performance
30031	SCM	Perforce	Perforce Performance	Defect	High	Perforce	Perforce	Perforce	2004-09-17	2004-09-17	Not Done	Open	High	Not Done	Perforce Performance
30030	SCM	Perforce	Perforce Performance	Defect	High	Perforce	Perforce	Perforce	2004-09-17	2004-09-17	Not Done	Open	High	Not Done	Perforce Performance
30029	SCM	Perforce	Perforce Performance	Defect	High	Perforce	Perforce	Perforce	2004-09-17	2004-09-17	Not Done	Open	High	Not Done	Perforce Performance
30028	SCM	Perforce	Perforce Performance	Defect	High	Perforce	Perforce	Perforce	2004-09-17	2004-09-17	Not Done	Open	High	Not Done	Perforce Performance
30027	SCM	Perforce	Perforce Performance	Defect	High	Perforce	Perforce	Perforce	2004-09-17	2004-09-17	Not Done	Open	High	Not Done	Perforce Performance
30026	SCM	Perforce	Perforce Performance	Defect	High	Perforce	Perforce	Perforce	2004-09-17	2004-09-17	Not Done	Open	High	Not Done	Perforce Performance
30025	SCM	Perforce	Perforce Performance	Defect	High	Perforce	Perforce	Perforce	2004-09-17	2004-09-17	Not Done	Open	High	Not Done	Perforce Performance
30024	SCM	Perforce	Perforce Performance	Defect	High	Perforce	Perforce	Perforce	2004-09-17	2004-09-17	Not Done	Open	High	Not Done	Perforce Performance
30023	SCM	Perforce	Perforce Performance	Defect	High	Perforce	Perforce	Perforce	2004-09-17	2004-09-17	Not Done	Open	High	Not Done	Perforce Performance
30022	SCM	Perforce	Perforce Performance	Defect	High	Perforce	Perforce	Perforce	2004-09-17	2004-09-17	Not Done	Open	High	Not Done	Perforce Performance
30021	SCM	Perforce	Perforce Performance	Defect	High	Perforce	Perforce	Perforce	2004-09-17	2004-09-17	Not Done	Open	High	Not Done	Perforce Performance
30020	SCM	Perforce	Perforce Performance	Defect	High	Perforce	Perforce	Perforce	2004-09-17	2004-09-17	Not Done	Open	High	Not Done	Perforce Performance
30019	SCM	Perforce	Perforce Performance	Defect	High	Perforce	Perforce	Perforce	2004-09-17	2004-09-17	Not Done	Open	High	Not Done	Perforce Performance
30018	SCM	Perforce	Perforce Performance	Defect	High	Perforce	Perforce	Perforce	2004-09-17	2004-09-17	Not Done	Open	High	Not Done	Perforce Performance
30017	SCM	Perforce	Perforce Performance	Defect	High	Perforce	Perforce	Perforce	2004-09-17	2004-09-17	Not Done	Open	High	Not Done	Perforce Performance
30016	SCM	Perforce	Perforce Performance	Defect	High	Perforce	Perforce	Perforce	2004-09-17	2004-09-17	Not Done	Open	High	Not Done	Perforce Performance
30015	SCM	Perforce	Perforce Performance	Defect	High	Perforce	Perforce	Perforce	2004-09-17	2004-09-17	Not Done	Open	High	Not Done	Perforce Performance
30014	SCM	Perforce	Perforce Performance	Defect	High	Perforce	Perforce	Perforce	2004-09-17	2004-09-17	Not Done	Open	High	Not Done	Perforce Performance
30013	SCM	Perforce	Perforce Performance	Defect	High	Perforce	Perforce	Perforce	2004-09-17	2004-09-17	Not Done	Open	High	Not Done	Perforce Performance
30012	SCM	Perforce	Perforce Performance	Defect	High	Perforce	Perforce	Perforce	2004-09-17	2004-09-17	Not Done	Open	High	Not Done	Perforce Performance
30011	SCM	Perforce	Perforce Performance	Defect	High	Perforce	Perforce	Perforce	2004-09-17	2004-09-17	Not Done	Open	High	Not Done	Perforce Performance
30010	SCM	Perforce	Perforce Performance	Defect	High	Perforce	Perforce	Perforce	2004-09-17	2004-09-17	Not Done	Open	High	Not Done	Perforce Performance
30009	SCM	Perforce	Perforce Performance	Defect	High	Perforce	Perforce	Perforce	2004-09-17	2004-09-17	Not Done	Open	High	Not Done	Perforce Performance
30008	SCM	Perforce	Perforce Performance	Defect	High	Perforce	Perforce	Perforce	2004-09-17	2004-09-17	Not Done	Open	High	Not Done	Perforce Performance
30007	SCM	Perforce	Perforce Performance	Defect	High	Perforce	Perforce	Perforce	2004-09-17	2004-09-17	Not Done	Open	High	Not Done	Perforce Performance
30006	SCM	Perforce	Perforce Performance	Defect	High	Perforce	Perforce	Perforce	2004-09-17	2004-09-17	Not Done	Open	High	Not Done	Perforce Performance
30005	SCM	Perforce	Perforce Performance	Defect	High	Perforce	Perforce	Perforce	2004-09-17	2004-09-17	Not Done	Open	High	Not Done	Perforce Performance
30004	SCM	Perforce	Perforce Performance	Defect	High	Perforce	Perforce	Perforce	2004-09-17	2004-09-17	Not Done	Open	High	Not Done	Perforce Performance
30003	SCM	Perforce	Perforce Performance	Defect	High	Perforce	Perforce	Perforce	2004-09-17	2004-09-17	Not Done	Open	High	Not Done	Perforce Performance
30002	SCM	Perforce	Perforce Performance	Defect	High	Perforce	Perforce	Perforce	2004-09-17	2004-09-17	Not Done	Open	High	Not Done	Perforce Performance
30001	SCM	Perforce	Perforce Performance	Defect	High	Perforce	Perforce	Perforce	2004-09-17	2004-09-17	Not Done	Open	High	Not Done	Perforce Performance

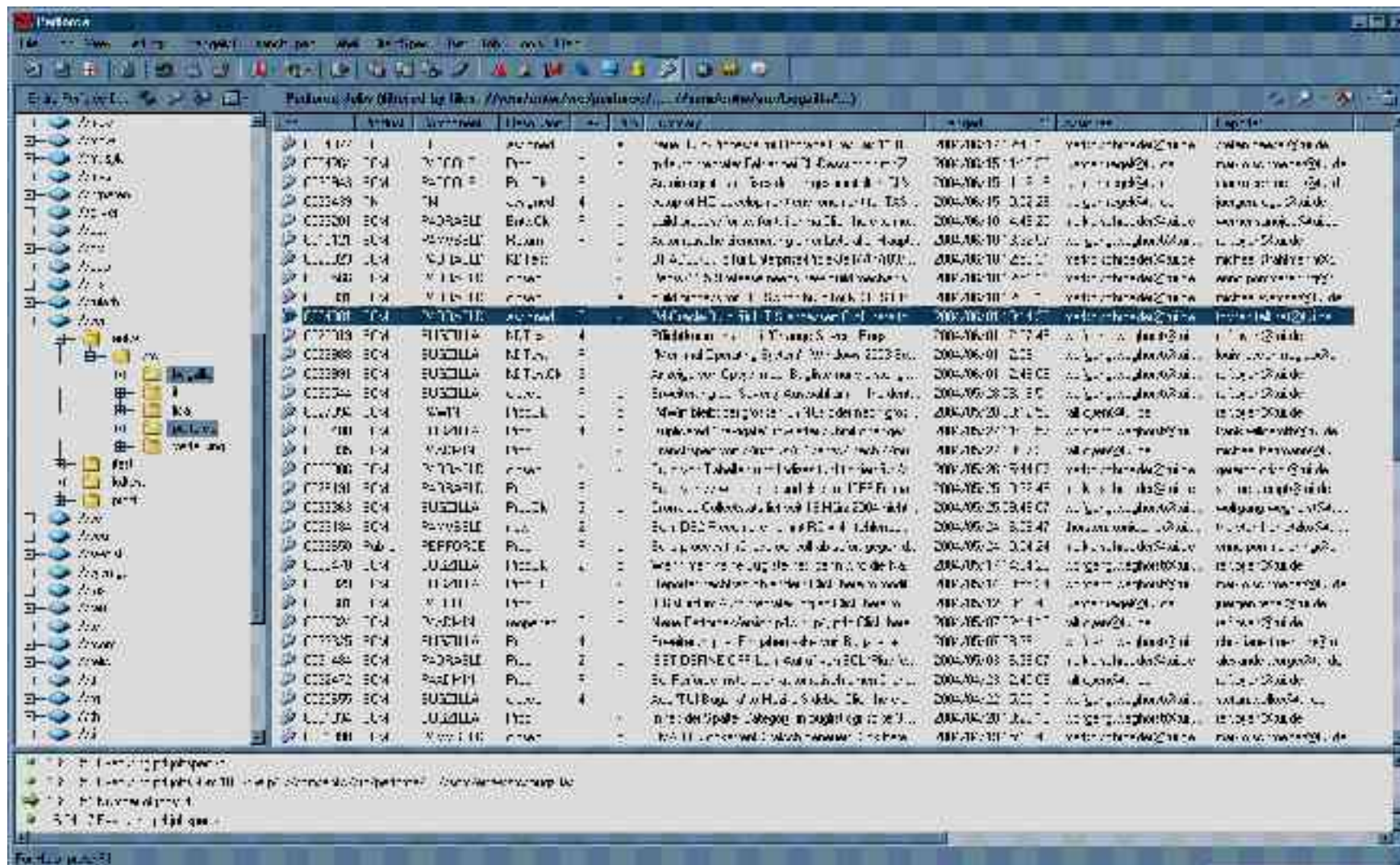
Perforce & Bugzilla at TUI

Changelist-Number as a Hyperlink to P4Web



Perforce & Bugzilla at TUI

Jobs in P4Win synced from Bugzilla



Benefit:

- ① simple integration:
 - ① only few code-changes in Bugzilla
 - ① „simple“ submit-trigger in p4d
- ① easy to use for developer
- ① > 35.000 Bugs/Jobs

Problems:

- ① Developer has to use Bugzilla to make changes (no real problem)
- ① no history available in P4Win (no real problem)
- ① No security in P4Win, all users can see all jobs -> RFC ;-)

Perforce User Group

vielen
Dank

und
Tschüss

